

Initial Setup Instructions for Ready Broadband USB Data Card

Version: 2.0.0.64
Date: 10/14/2010

Notice: Please install software before plugging you data card into your computer.

1. Dial 800-593-2207 to activate your card.
 - a. You will be asked to enter an 8, 11, or 18 digit ESN (Electronic Serial Number). Your ESN can be located on the underside of the data card. Please select the appropriate option for your ESN.
 - b. You will be asked to create a 4 digit security PIN.
 - c. Then you will be asked to enter your 12 digit Activation PIN. This PIN can be found in the upper right hand side of the free 5 Megabytes Activation Card which is included with your purchase. This free Activation Card will expire on midnight of the day of activation. If you did not receive a free activation card, please call customer service at 800-593-2207.

PIN activations can take from 15 minutes to 4 hours depending on network delays. Typically, it takes about 15 minutes.
2. Insert the installation media provided. Your installation media will either be a CD-ROM or USB Flash Drive. (see images below)



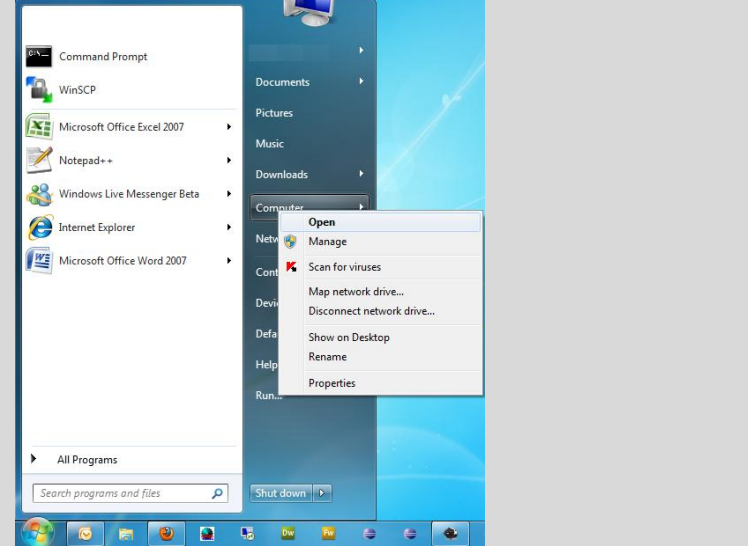
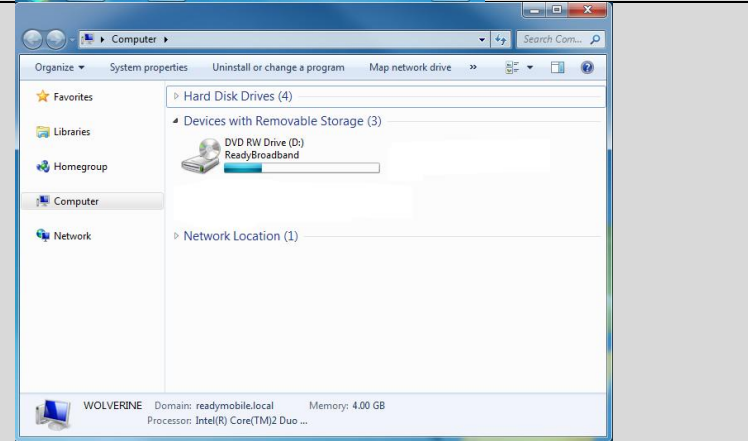
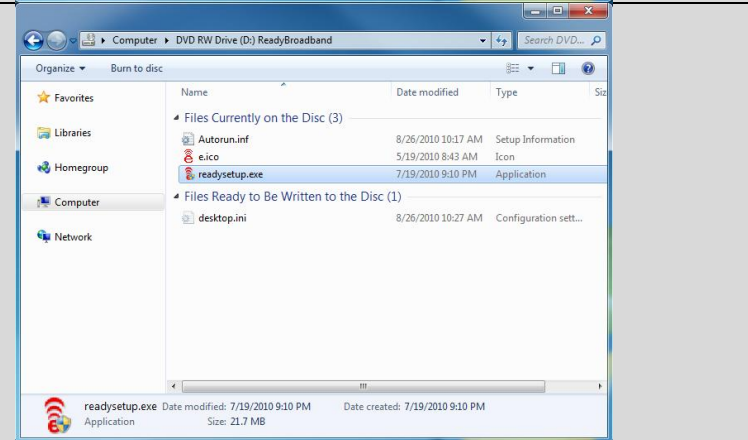
Mini CD-ROM



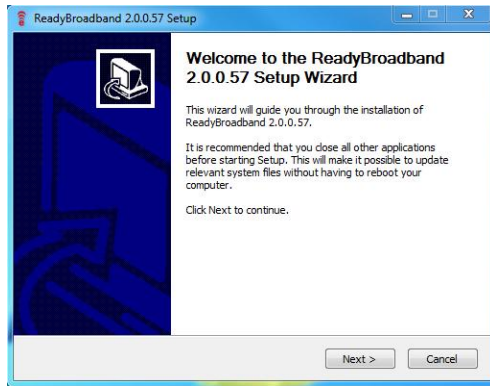
USB Flash Drive

3. The installation will automatically start. If it fails to start, please follow the directions below in the gray box to manually launch the installation process.

Directions for Manual Launch of Installation

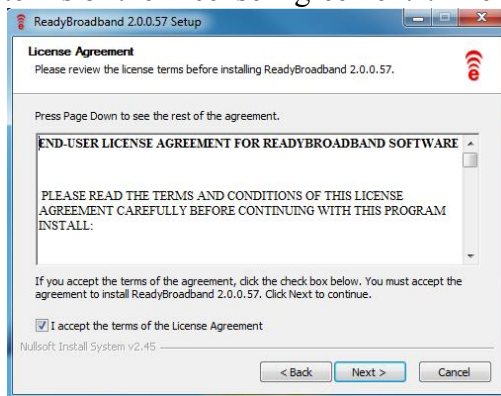
 A screenshot of the Windows Start menu. The 'Computer' icon is right-clicked, and a context menu is open. The 'Open' option is highlighted. The Start menu shows various applications like Command Prompt, WinSCP, Microsoft Office Excel 2007, Notepad++, Windows Live Messenger Beta, Internet Explorer, and Microsoft Office Word 2007. The taskbar at the bottom shows several icons including Internet Explorer, File Explorer, and several instances of Firefox.	<p>Click on the Windows Start Button. Right click on Computer. Then click on Open from the popup menu</p>
 A screenshot of the Windows 'Computer' window. The 'DVD RW Drive (D:) ReadyBroadband' is selected in the 'Devices with Removable Storage (3)' section. The system tray at the bottom shows 'WOLVERINE' with domain 'readymobile.local' and memory '4.00 GB'.	<p>Look for the drive labeled ReadyBroadband and double click on it</p>
 A screenshot of the Windows 'DVD RW Drive (D:) ReadyBroadband' window. The 'Files Currently on the Disc (3)' section is expanded, and 'readyssetup.exe' is selected. The file details at the bottom show 'readyssetup.exe' as an application, dated 7/19/2010 9:10 PM, with a size of 21.7 MB.	<p>Look for readyssetup.exe and double click on it.</p>

4. When the installation begins you will be prompted to go through an installation wizard. Below is the first screen of the installation wizard. Click next on this screen.



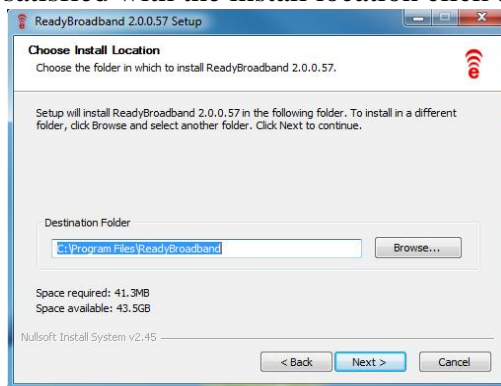
5. License Agreement Screen

Please read through the license agreement and when finished click “I accept the terms of the License Agreement”. Then click the next button.



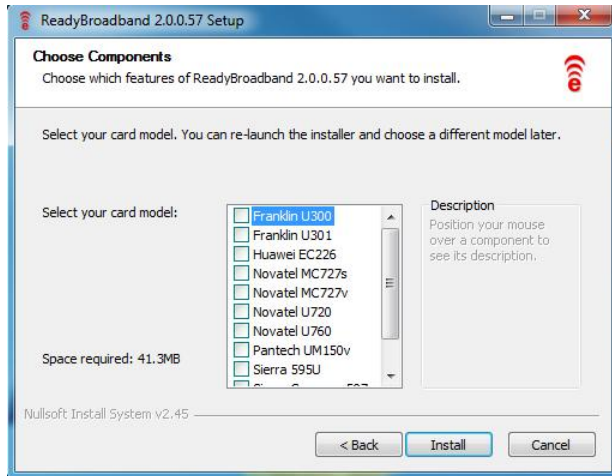
6. Choose Install Location Screen

On this screen you can choose the location of where you would like to install the Ready Broadband Connection Manager. You can change the location if you like, but it is recommended to install into the default location selected. When you are satisfied with the install location click the next button.



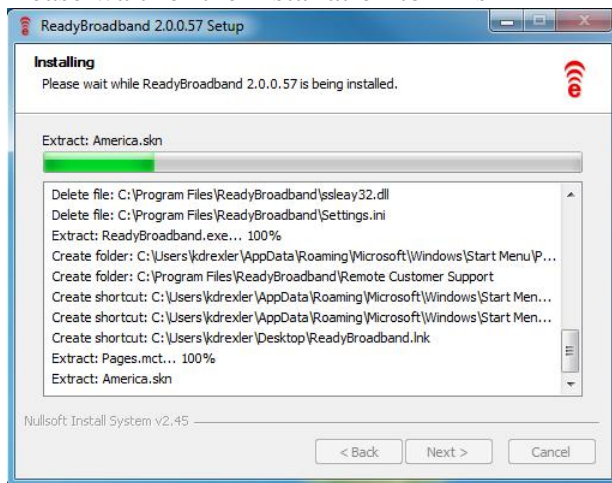
7. Choose Components Screen

Select the model of Broadband Data Card that you have. If you are unsure of which model you have please check the underside of the device for a model name.



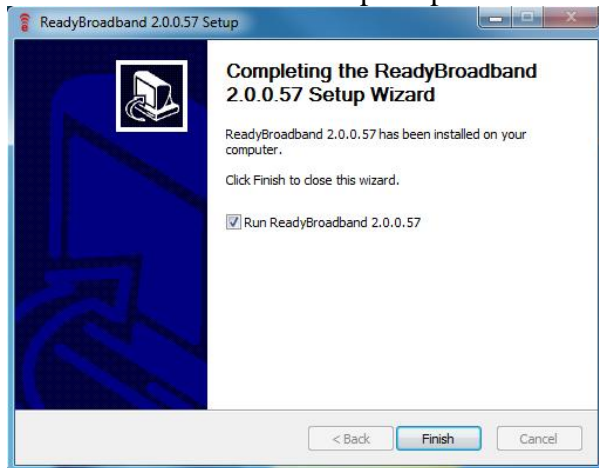
8. Installing Screen

Please wait for the installation to finish



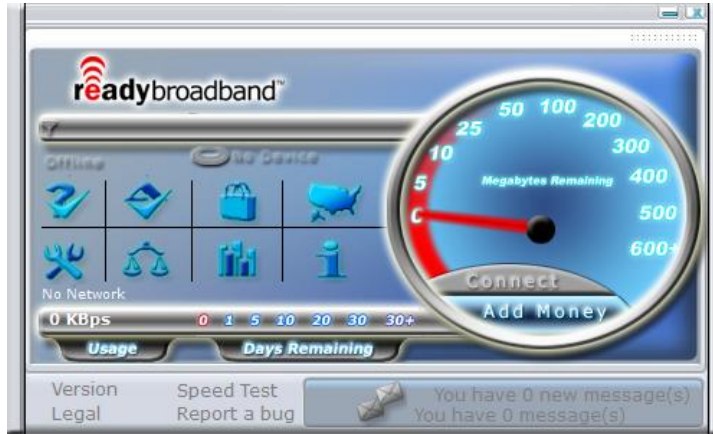
9. Completing Setup Screen

Once the installation is complete please click the finish button.



10. Running the Ready Broadband Connection Manager

The connection manager should start automatically after installation. A shortcut to launch the connection manager is also available on your desktop and windows start menu.



11. Plug In Your Ready Broadband Broadband Device

Plug your USB broadband device into your computer and wait for the connection manager to recognize the device. This can take up to 2 minutes while your computer configures drivers for your device.

12. Connect to the Internet

Click the connect button on the Ready Broadband Connection Manager.

Open up a web browser (eg. Internet Explorer, Mozilla Firefox) and start browsing the Internet.

Windows 7 Notice:

Some devices, when used on Windows 7, will get recognized as an extra storage device. If your connection manager is stating that No Device detected for more than 5 minutes, then please follow the steps below to resolve this issue.

1. Click on the Start Button
2. Click on "Computer"
3. A new drive should be listed in the window that pops up
4. Right click on the extra drive listed and select "Eject" from the popup menu
5. The computer will then continue along the process of recognizing the USB device

Purchasing More Megabytes

Additional Megabytes can be purchased at the store in which you purchased your data card, or online at <https://selfcare.readybroadband.com>. You will be asked for a 4 digit passcode. This passcode is setup when you activate your device.

Managing Your Account

You can view your current account balance and activate top up PINs at <http://selfcare.readybroadband.com>. To access your account information online, enter your USB Card ESN and the 4 digit PIN you created in step 1 b.

Common Problems and Solutions

Device is not recognized (Error Message)

First shut down your computer. After a few minutes, restart your computer. If that does not work, try uninstalling the Readybroadband Connection Manager software. Unplug the data card and then click on your Start Menu, then Control Panel, and then Add/Remove Software. Select the Readybroadband software program and uninstall it. Run through the installation steps in this document and then plug your data card back into your computer. You may also try connecting the card into another USB port on your computer and restarting the software. If your device still is not recognized, call customer service at 1-800-593-2207.

For more information on how to use your new Ready Broadband data card, please visit our website www.readybroadband.com. We provide recommendations on how to use your new service to get the maximum benefit from your bandwidth limits.

Rates and estimated ³ usages:

Card – Data	Expiration	Emails	Photos	Songs
\$25 – 300 MB	30 days	30,600	5,266	75
\$45 – 1 GB	30 days	102,400	17,067	250
\$75 – 2 GB	30 days	204,800	34,134	500

¹ EV-DO (High Speed) Data Rates: Downlink rate = 3.1 Megabits per second. Uplink rate = 1.8 Megabits per second

² 1XRTT Data Rates: 14.4 Kilobits per second maximum

³ Estimates based on the following file sizes: Email 10KB, Photo 60KB and Song 4MB. Rates and features are subject to change without notice. Taxes, surcharges and fees are included.

5 Megabyte FREE activation card included in your card purchase expires at midnight on the day of activation. Ready mobile is not responsible for the loss, theft or unauthorized use of the free 5 Megabyte data card.

To contact customer service, please call 800-593-2207